

187 000 €

Buying dernier étage

4 rooms

Surface : 128 m²

Surface of the living : 36 m²

Year of construction : 1948-1974

Exposition : Ouest

View : Citadine

Hot water : Individuelle

Inner condition : A rafraichir

Amenities :

double glazing, calm

3 bedroom

1 terrace

1 shower

1 WC

Legal information

187 000 €

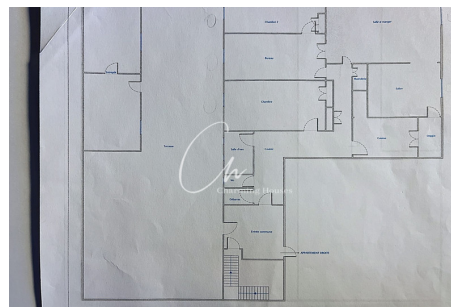
Fees paid by the owner, well condominium, no current procedure, information on the risks to which this property is exposed is available on georisques.gouv.fr.



Dernier étage 1325 Alès

Exclusive in Ales, T4 apartment with an exceptional terrace, located near the Poste Gare area. Situated on the first and top floor, with a Carrez law surface of 128m², it offers a range of annexes bringing the total area to 376m², including 200m² of terrace space. The terrace is a real highlight, perfect for enjoying outdoor living right in the heart of the city. On this terrace, you'll find a 35m² storage room, ideal for use as a workshop or storage. The apartment features a large living/dining room of 36m², a 12m² kitchen, a 4.30m² loggia, a laundry room, three spacious bedrooms (19m², 16m², 16m²), a shower room, separate WC, and storage spaces. Multiple exposures: west, northwest, and southeast, offering pleasant natural light throughout the day. Some refreshing work is needed, allowing you to put your own touch on the layout and decoration. Perfect for a family, a professional project, or an investment with added value. Asking price:...

Energy class (dpe) : E - Emission of greenhouse gases (ges) : E
Document non contractuel - 15/01/2026



Charming Houses - www.charminghousesrealestate.com

Location et vente de maisons - Provence, Corse, Montagne

Villas, Mas and Chalet to let and buy - Provence, Corsica, French Alps

38 Bd Mirabeau - 13210 Saint Remy de Provence (Alpilles) - France -

Tél: +33 (0)4 90 95 10 29 - reservation@charminghouses.net

Document non contractuel - Barème de prix disponible sur notre site internet